

President's Message

by Elsa Conrad

JUNE AT a synagogue is often a month to put up one's feet and relax. But this year we don't have a moment to spare. Just look at the calendar: High Holy Days kick off Sept. 4 with Rosh Hashanah, followed by Kol Nidre and Yom Kippur Sept. 13-14. None of it happens without planning, so summer at Betenu figures to be very hectic this year.

With the High Holy Days coming up fast, this is a time of year when taking part truly leads to spiritual growth. And it doesn't have to be difficult. Try these ideas and become a Betenu volunteer. It's easier than you think!

Five Easy Ways to Help

1. **Lead the children's Rosh Hashanah service.** A little less structured, the kids' service is fun and easy. You'll free up other volunteers and get to know the next generation of Betenu leaders.

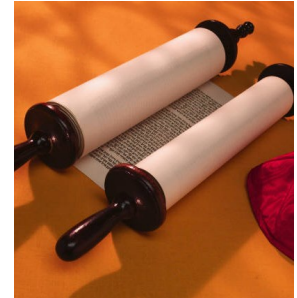
With the High Holy Days coming up fast, taking part truly leads to spiritual growth. Try these ideas and become a Betenu volunteer. It's easier than you think!

2. **Help identify local Jewish families who are unaffiliated.** To succeed this year, our membership base must grow. Know someone? Pass their name along.
3. **Be an ambassador for our community and religious school.** Word of mouth about Betenu activities is our best advertising. Keep up with our latest activities, and make sure your friends do too.
4. **Volunteer for a fundraiser.** Increasing our fundraising efforts is a must. Many projects require only a few hours and can be done at your convenience. To find just the right activity, talk to one of our Board officers listed on page 2.

5. **Share your ideas.** With new rabbinic leadership this year, we are eager to share our traditions with **Nate DeGroot** while also evolving new ones. Why not offer your suggestions on how we can add meaning and joy to our observance?

Now a closing word about (surprise) money.

At the May 26 Annual Meeting, our primary concern was finance; Betenu must be quicker and more proactive in fundraising. Consequently you'll soon receive your last statement for 2012-13. If you have an outstanding membership balance, please do your best to send it to the office as soon as possible. Every dollar counts toward our success.



IN THIS ISSUE

President's Message

News & Notes

New Rabbinic Intern
Nate DeGroot

Education News

June/July Calendar

Barbara Bailey &
Elaine Schwartz
To Be Honored

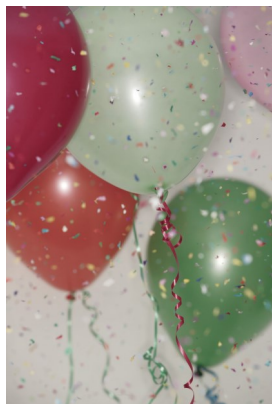
CONGREGATION BETENU

A Member of the Union
for Reform Judaism

5 Northern Boulevard
Amherst, NH 03031
(603) 886-1633

On the Web:
www.betenu.org

To submit articles
or information, email:
betenu@nii.net



**Join us this month
in celebrating these
members for their
milestones,
contributions and
achievements.**



Oneg Signups Needed for June 7, June 28

Honor a special event or loved one. It's easy!

Sponsoring an oneg costs only \$54. Or host it yourself. Simply bring a challah, desserts and fruit, then set the table with a quick cleanup afterwards. For details, email **Sheryl Liberman** at saml54@comcast.net.

NEWS & NOTES

ACKNOWLEDGMENTS

Thank You!

- ◆ **Mark and Deb Starin**, for helping us to procure our new file cabinets.
- ◆ **All families and friends** who provided brunch on our final day of Sunday school, May 19. Also a big thanks to those attending the student assembly.
- ◆ **Vivian McGuire & Maureen MacGregor**, for oneg sponsorship

Happy Birthday!

- ◆ **Gavin Belesca**

Contributions

- ◆ **Geoffrey Gross**, to the Gross Education Fund
- ◆ **Paula Silver**, to the General Fund in memory of **Richard Silver**

YAHRZEITS

In Loving Memory Of:

- ◆ **Harry Fox**
uncle of Sheryl Liberman June
- ◆ **Maria Montes**
mother of Carola Goodman June 1
- ◆ **Shirley O'Malley**
aunt of Pam Blotcky June 4
- ◆ **Abraham Fisher**
grandfather of Karen Satz June 5
- ◆ **Louis Paonessa**
grandfather of Elissa Kahn June 6
- ◆ **Marie Louise Fish (Heckler)**
great-aunt of Elissa Kahn June 10
- ◆ **Harry Groden**
grandfather of Karen Satz June 11
- ◆ **Hyman Rosenthal**
grandfather of Elyse Wasserman June 11
- ◆ **David Friedland**
uncle of Steve Blotcky June 11
- ◆ **Lucille Cooper**
mother of Roberta Pavoll June 14
- ◆ **Harold Rosenblume**
grandfather of Paula Silver June 15
- ◆ **Martha Gross Williger** June 15
- ◆ **Rose Lillian Lerner**
mother of Arnold Lerner June 23,
June 25

Sharing Your Input, Time and Ideas

IF YOU have ideas to share or a hand to lend, why not let us know?

Taking part in a Betenu activity or committee is a fun way to contribute and expand your circle of friends, so feel free to contact us today. Just refer to the contact list at right. We are eager to discuss your questions, input and ideas!

CONGREGATION BETENU OFFICERS

President: Elsa Conrad 603-879-9189

VP Finance: Bob Rimalover 603-672-5629

VP Education: Sheryl Liberman 603-424-4609

Secretary: Pam Blotcky 603-882-4029

Trustees: Steve Blotcky 603-882-4029, Susan Rodil 603-878-4677

Trustees At-Large: Sara Murphy 603-465-7119,
Joel Silberberg 603-472-8143

Oneg Representative: Roberta Pavoll 603-672-9820

Publicity: Barbara Bailey 603-880-9355, Marcella Dube 603-673-9412

Rabbinical Intern: Nate DeGroot rabbid@betenu.org

Rabbi Emeritus: Joshua Segal emeritus@betenu.org

Welcome to Betenu, Nate DeGroot!

THIS MONTH we are delighted to announce that **Nathan DeGroot** will serve as Betenu's Rabbinic Intern for the coming year.

Nate will lead High Holy Day Services in addition to serving at Betenu two weekends a month, September through May. On these weekends he will lead Friday services and take part in school on Sundays. Nate will also officiate at B'Nei Mitzvot ceremonies for the coming school year.



A student at the Rabbinic School of Hebrew College, Nate was formerly Rabbinic Intern at the University of Rhode Island Hillel, where he

led High Holy Day services and acted as chaplain to students. He is a graduate of Vanderbilt University, as well as an experienced religious teacher whose enthusiastic style has won high marks from students and parents alike.

"We were very impressed with Nate's warmth and enthusiasm," noted Betenu president **Elsa Conrad**. "We feel he will inspire us all to celebrate our Judaism, and hope you will take the opportunity to introduce yourself at Betenu events." Welcome to our community, Nate.

FROM THE EDUCATION COMMITTEE

SCHOOL NOTES

- ◆ Join Betenu's future Bar/Bat Mitzvah students at the June 7 Shabbat service and support them as they prepare for their big day! It starts at 7:30 pm.
- ◆ Now's the time to catch up on service requirements. Stop by at 7:30 pm on June 7 or June 21, or at 7 pm on June 28.
- ◆ To learn more about Betenu educational activities, contact **Sheryl Liberman** at 424-4609 or saml54@comcast.com.



▲ **Students gather for their final class and a teacher appreciation brunch on May 19. Thanks to all our parents and volunteers for making this a great conclusion to the school year!**

◀ **Rabbi Joel Baron instructs Betenu's Bar/Bat Mitzvah students as they prepare for their Torah readings.**

Early Lay-led Service at 7 pm on June 28

You wanted a family-friendly time for services. Now you have it! We start at 7 pm on Friday, June 28. Bring the family plus your children's prayer books, and finish in plenty of time to put the little ones to bed!

Baseball, Betenu and Bingo, July 15

Why spend hundreds to squeeze into Fenway? You and your family will have a ball at Holman Stadium on July 15, as the



Nashua Silver Knights battle the Pittsfield Suns in the Futures Collegiate Baseball League. Tickets for Betenu members are only \$4. Plus it's Bingo Night at the park with prizes! Game time is 7:05 pm. Call our office to reserve seats, or contact **Sheryl Liberman** at 424-4609.

In the Hospital? Keep Us Informed

National privacy laws keep hospitals from calling congregations when their members are admitted as patients. If you'd like help or a little friendly support during your convalescence, just ask for the hospital chaplain and request that Betenu be notified. We're here for you.



June at Betenu

SUNDAY	MONDAY	TUESDAY	WEDNESDAY	THURSDAY	FRIDAY	SATURDAY
						1 Shelach
2	3	4	5	6	7 Lay-led Service, 7:30	8 Korach Rosh Tammuz
9 Rosh Tammuz	10	11	12	13	14 No Service	15 Chukat
16	17 General Board Mtg, 7:45	18	19	20	21 Practice Bar Mitzvah Service, 7:30 (Student-led)	22 Balak
23	24	25	26	27	28 Family Service with Children's Prayer Books, 7:00	29 Pinchas
30						

July at Betenu

SUNDAY	MONDAY	TUESDAY	WEDNESDAY	THURSDAY	FRIDAY	SATURDAY
	1	2	3	4	5 No Service	6 Matot-Masel
7	8 Rosh Chodesh	9 Rosh Chodesh	10	11	12 Lay-led Service, 7:30	13 Chazon
14	15 Erev Tisha B'av Baseball Game, 7:05	16 Tisha B'av	17	18	19 No Service	20 Nachamu
21	22	23	24	25	26 Family Service with Children's Prayer Books, 7:00	27 Ekev
28	29	30	31			

**Barbara Bailey,
Elaine Schwartz
Honored with
Shem Tov Awards**

We're very pleased to announce that **Barbara Bailey** and **Elaine Schwartz** have just been named 2013 Shem Tov Award winners by the Jewish Federation of New Hampshire.



**Barbara
Bailey**

**Elaine
Schwartz**

Leading the Tu B'shevat Seder for more than 20 years, Barbara and Elaine will be honored on June 9 for their tireless volunteerism on behalf of Betenu and its religious education programs. Always quick to lend a hand, Barbara and Elaine epitomize the very best that Betenu has to offer.

Our sincere thanks and congratulations go out to Barbara and Elaine, as well as to their proud families. Mazel Tov!

BETENU BITS

SAVE THE DATE:

Sunday, Aug. 25, 10:30 am

Bring the whole family for a meet-and-greet brunch with **Nate DeGroot**, Betenu's new Rabbinic Intern. It's a great chance to share your thoughts for the coming holiday season. Includes food and children's activities!

Share a Little Sunshine

Our "Sunshine Committee" volunteers are a vital point of contact when congregants are ill, need rides or require a little extra assistance. If you would like to volunteer or learn more, contact **Sheryl Liberman** at 424-4609 or saml@comcast.net.

MC, Visa and Discover

Your credit card can now pay Betenu dues, tuition, gift purchases or donations! Just call the office or stop in today to arrange the charge details.

July Newsletter Deadline

Please email submissions to betenu@nii.net by June 21.

THE JEWISH FEDERATION OF NEW HAMPSHIRE

ANNUAL MEETING & KEYNOTE ADDRESS

Sunday, June 9

Moms & Dads...
Babysitting
Available-
Call in advance
627-7679

KEYNOTE SPEAKER:
Anita Diamant
*Author of **The Red Tent** and **The New Jewish Wedding***

Diamant's newest novel, *Day after Night*, takes place in the Atlit Displaced Person's Camp. This camp housed displaced Jews during WWII when Jews were prevented by the British from entering Palestine. The restored camp is located in our Sister City of Hof Hacarmel and can be visited by those journeying to Israel.

Young Adult
Leadership
Award

Shem Tov
Awards

10:00 AM

BRUNCH & SILENT AUCTION

Proceeds to benefit PJ Library and the JFNH Camp Grant program

11:00 AM

ANNUAL MEETING

with INSTALLATION of
THE JFNH BOARD





Jewish Federation
OF NEW HAMPSHIRE

698 Beech Street, Manchester, NH

\$5.00 SUGGESTED DONATION

RSVP Required

info@jewishnh.org or 627-7679