

## Taking Stock as a New Year Approaches

by Elsa Conrad

**T**HIS SUMMER it has been relaxing to know that we won't be starting the High Holidays during the already crazy days of early September. Yet, despite the relatively late dates of the holidays on the secular calendar, the new synagogue year will soon begin, with the first day of religious school and a welcome-back potluck dinner and rabbi-led service on Friday, Sept. 12. As we begin preparations for 5775, we have made significant progress in the last year—progress we can build on in the year ahead.

- ◆ **Nate DeGroot**, our 2013-2014 intern, will return for the High Holidays as a veteran (and old married man) who knows many of us and has learned to blend new ideas and Betenu traditions.
- ◆ We are preparing to welcome **Rebekah Goldman** as our first female spiritual leader. Although

**As we look ahead to 5775, we have made significant progress in the last year.**

Rebekah will begin her official duties in January, she'll lead services on Aug. 8 and Sept. 12 and spend a Sunday in September with the religious school.

- ◆ We've established new fundraising programs to improve revenues.
- ◆ We've strengthened our leadership team with **Pam Blotcky** as VP Education, **Sheryl Liberman** as Co-President, and **Allison Leary** on the executive board as Trustee.

But Betenu still faces challenges. We must work together in these areas:

- ◆ Our income needs to increase. Your 2014-2015 membership bill will be arriving soon. Please try to

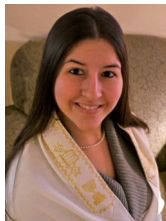
increase your contribution. If you can't pay in full, return the form with an explanation about your situation. Only careful planning enables us to meet our obligations.

- ◆ Changes on the board mean that we need a new secretary. We also need a treasurer. No experience is necessary! We can also use help with office work, organizing events and publicizing fundraisers.

More than anything, we need more people to know about us. New members bring new ideas and enthusiasm, while improving our finances. People are looking for connections when they seek a synagogue. If you know potential members, provide that extra push and encourage them to join.

## Rav Rebekah to Lead Aug. 8 Shabbat

Betenu's next rabbi-led Shabbat service takes place on Aug. 8 at 7:30 pm with **Rebekah Goldman**, our 2015 rabbinic intern. If you haven't met Rebekah yet, join us for an enjoyable Shabbat full of smiles, beautiful song, prayer and good friends.



### Oneg sponsor needed

If you've never sponsored an oneg, here's the perfect opportunity. You simply bring a challah and food to share—a sweet dessert, fruit or some finger foods, plus beverage—and place them in the Oneg Room before services. During clean-up, leftovers can be placed in the fridge. A signup sheet is in the foyer, or call 886-1633 to volunteer.

### NO MARKET BASKET? NO PROBLEM!

Even as the supermarket wars rage on, you still have to shop. So why not pick up a Hannaford gift card from Betenu? \$50 or \$100 cards are good at local stores, and we get 5% of all proceeds.



To get your Hannaford gift cards, stop by the Betenu office or contact us today. You can reach us by phone at 886-1633, or by email.



## Happy Birthday

*Olivia Spokane  
Isabel Starr  
Andrew Dube  
Elisabeth Rodil*

## High Holidays Food Drive

To help those in need, please take an empty bag at our Sept. 24-25 services and return it full of nonperishable food and essentials by Oct. 4.

Donations will go to **SHARE**. To find out more, visit [sharenh.org](http://sharenh.org). We truly appreciate your help in this important effort.



## NEWS & NOTES

### ACKNOWLEDGMENTS

#### Thank You!

- ◆ A very special thanks to **Faith Episcopal Church** for their July 12 Yard Sale—they not only shared their space, but helped us transport items! Thanks also to everyone who donated goods for sale, as well as our great volunteers: **Barbara Bailey, Steve and Pam Blotcky, Elsa Conrad, Maureen MacGregor and Elaine Schwartz.**
- ◆ **Sara and Dan Murphy** for website and email hosting.
- ◆ **Roberta Pavoll** for donating paper goods and supplies.

### ANNOUNCEMENTS

2015 membership and tuition bills will go out early this month. Prompt payment helps us meet our financial goals and makes us stronger in the coming year. Thank you!

### YHRZEITS

#### In Loving Memory

- ◆ **William Feathers**  
father of Yvonne Vogel August 2
- ◆ **Miriam Macks**  
grandmother of Elsa Conrad August 3
- ◆ **Saul Berl**  
father of Jetta Darrow August 5
- ◆ **Pearl Houts**  
mother of Patrice Liff August
- ◆ **Paula Hurwitz**  
aunt of Elaine Silberberg August 15
- ◆ **Sheppard Werner**  
cousin of Sara Murphy August 15
- ◆ **Faith Flagler**  
mother of Susan Rodil August 21
- ◆ **Julian Vogel**  
father of Ben Vogel August 23
- ◆ **Sandra Throw**  
sister of Lin Robinson August 25

## Honoring Loved Ones on Yom Kippur

Betenu will distribute a Yizkor Memorial Booklet on Saturday, Oct. 4 to honor deceased relatives and friends. The booklets will be handed out on Yom Kippur at the Yizkor service, and names will be read aloud at that service.

To include your deceased loved ones, please email the following information by Sunday, Sept. 14:

- ◆ Name to be memorialized
- ◆ Relationship to donor
- ◆ Donor name.

Please enclose a minimum donation of \$6 per name, in a check made out to Congregation Betenu. (Note that we do not ask for a donation for names of people who died in the last year.) Checks should be mailed to Congregation Betenu, 5 Northern Blvd, #1, Amherst, NH 03031.



### CONGREGATION BETENU OFFICERS

**Co-Presidents:** Elsa Conrad 879-9189, Sheryl Liberman 424-4609

**VP Finance:** Bob Rimalover 672-5629

**VP Education:** Pam Blotcky 882-4029

**VP Administration:** Barbara Bailey 880-9355

**Membership:** Mark Starin 486-8083

**Trustees:** Steve Blotcky 882-4029, Allison Leary 672-4774,  
Vivian McGuire 882-3139, Roberta Pavoll 672-9820

**Trustees At-Large:** Sara Murphy 465-7119, Joel Silberberg 472-8143

**Oneg/Interfaith Representative:** Roberta Pavoll 672-9820

**Publicity:** Barbara Bailey 880-9355, Marcella Dube 673-9412

**Rabbi Emeritus:** Joshua Segal [emeritus@betenu.org](mailto:emeritus@betenu.org)

# Get Ready for the High Holidays!



## KEY DATES

- ▶ Rosh Hashanah services are Wednesday, Sept. 24 at 7:30 pm and Thursday, Sept. 25 at 10:30 am. Yom Kippur begins with Kol Nidre on Friday, Oct. 3 at 7:30 pm. Services go all day on Saturday, Oct. 4, starting at 10:30 am and including a break period from around 1 pm to 3:30 pm.

## ADMISSION/TICKETS

- ▶ Betenu will be sending out High Holiday Admission letters to all members in good standing. We will also provide admissions at no cost to military personnel and students. Non-members may call Betenu at 886-1633 to order tickets in advance. Any non-member who purchases tickets for the High Holy Days and chooses to join the temple by the end of December, will receive full credit toward dues.

## PARTICIPATION

- ▶ We would greatly appreciate volunteers willing to help with the following:
  - ◆ Set up and break down seating
  - ◆ Serve as children's services leader and aide for Sept. 25 and Oct. 4
  - ◆ Act as greeters
  - ◆ Blow the shofar
  - ◆ English readers (contact Elsa Conrad)
  - ◆ Hebrew readers (contact Sanders Burstein)
  - ◆ Office assistance with booklets and administrative chores

## HOLIDAY ADS

- ▶ An announcement in our Holiday Booklet is a great way to share holiday wishes or honor loved ones. Ads should be submitted in .jpg format by Aug. 31 via email them. Sizes and prices are as follows:
  - ◆ Full-page ad (4" w x 6.5" h): \$100
  - ◆ Half-page ad (4" w x 3" h): \$60
  - ◆ Quarter-page ad (2" w x 3" h): \$36

## PLANNING REMINDERS

- ▶ To avoid last-minute holiday stress, keep these points in mind:
  - ◆ Please bring your admission letters with you to ALL services to expedite entry.
  - ◆ Members have preferential seating in the sanctuary until 15 minutes before each service begins.
  - ◆ Babysitting will be available during the morning services on both Rosh Hashanah and Yom Kippur.
  - ◆ Junior services will be available.
  - ◆ For evening or weekend services, parking is available in the condo lot.
  - ◆ For weekday services, please park on Northern Blvd or on Columbia Drive on the side of the street closest to Betenu. You may also park in the far end of the Wal-Mart lot (closest to Betenu).

**Federation Viewpoint: Daniel Cohen/Daniel E. Levinson**

## Stop the Sirens

**A**S MANY OF YOU are no doubt aware, Israel continues to suffer under a constant barrage of rocket and mortar attacks, which have injured and terrified Israeli civilians in cities, towns and kibbutzim across the country. Israel is not only facing a threat from rockets fired out of Gaza, but now must deal with an elaborate system of tunnels built by terrorists, with one goal in mind: to infiltrate Israel in order to kidnap or kill Israeli civilians. Fortunately the Israeli Defense Forces have done an excellent job thus far in finding and destroying the tunnels, but the fact that they exist at all points to the kind of existential threat which Israelis must contend with on a daily basis.

Beyond the resilience of the Israelis themselves perhaps the most amazing thing to occur in the middle of this current conflict is the fact despite ceaseless attacks on its own people, the government of Israel has worked tirelessly to send food and supplies into Gaza and to provide medical care when they can to Palestinians injured in the fighting.

At times like these it can be easy to feel helpless, but the reality is that we do

have options when it comes to showing our support for Israel. One important action we can take is to participate in the Jewish Federations of North America emergency fundraising campaign for Israel.

Each federation across the country had been asked to participate and send what we can, including the Jewish Federation of New Hampshire. By joining with other Jewish communities across North America in this effort, we are not only providing badly needed financial support, but sending a powerful message to the people of Israel that they are not alone as the rockets fall and the sirens wail from Jerusalem to Tel Aviv.

We are very grateful to everyone who has stepped up and made a contribution to this important cause, and hope that if you have not already made a donation that you will do so today. Any amount will be greatly appreciated and every dollar will make a difference to the families whose lives have been torn apart by Hamas and its brutal assault on the people of Israel.

*This article originally appeared online at the Jewish Federation of New Hampshire website.*

*To make a donation, visit [jewishnh.org](http://jewishnh.org).*

## Save Big and Make a Free Donation to Betenu

On August 23, Macy's holds its annual "Shop for a Cause" sale. With a \$5 sales voucher, you can save up to 25% on most Macy's purchases—and the \$5 goes straight to Betenu. To buy vouchers, stop by the Betenu office on Fridays before services, around 7:15-7:30 pm. Or get in touch with **Sheryl Liberman** or **Elsa Conrad** today.



## IN BRIEF

### A New Email Address for Betenu

Recently **Sara & Dan Murphy** kindly offered to host our website and email, so we have a new email address. To send email to the office, please use the web form at [www.betenu.org/office](http://www.betenu.org/office). Please make a note of it!

### Support for the Hospitalized

Privacy laws keep hospitals from calling us when our members are admitted. If you need a little help or would just like some friendly conversation, ask for the hospital chaplain and request that Betenu be notified.

### Benefit Betenu When You Shop

We still have Hannaford gift cards for sale at the office, with a portion going to Betenu. Or if you want to do some online shopping, click the Amazon link at [betenu.org](http://betenu.org) and shop away. We'll get a share of all purchases at no cost to you.

### September Newsletter Deadlines

With the High Holidays coming, please email all newsletter updates by Friday, Aug. 21.

## EDUCATION NEWS

### Parents, Mark Your Calendars

A parent meeting for all Betenu Sunday School students will be held Tuesday, Aug. 19 at 7 pm. Meet **Pam Blotcky**, our new VP of Education, and preview the schedules, policies and changes for the 2014-15 year.

### First Day of Sunday School: Sept. 7

Summer's nearly over! We look forward to seeing students at 9 am on Sept. 7.

### September Classes for Post B'nei Mitzvah/Confirmation Students

Post B'nei Mitzvah classes will take place on Sept. 7 and Sept. 21, from 9:30 am to noon. Please call **Sheryl Liberman** if you have any questions, at 424-4609.



# August at Betenu

SUNDAY	MONDAY	TUESDAY	WEDNESDAY	THURSDAY	FRIDAY	SATURDAY
					1 No Service	2 <i>Devarim</i>
3	4	5	6	7	8 Service led by Rebekah Goldman, 7:30 pm	9 <i>Va'etchanan</i>
10	11	12	13	14	15 No Service	16 <i>Ekev</i>
17	18 General Board Meeting, 7:30 pm	19 Parents' School Meeting, 7 pm	20	21	22 Lay-led Service, 7:30 pm	23 <i>Re'eh</i>  Shop for a Cause @ Macy's
24	25	26 <i>Rosh Chodesh</i>	27 <i>Rosh Chodesh</i>	28	29 No Service	30 <i>Shoftim</i>

# September at Betenu

SUNDAY	MONDAY	TUESDAY	WEDNESDAY	THURSDAY	FRIDAY	SATURDAY
	1 Labor Day	2	3	4	5 Family Friendly Lay-Led Service, 7 pm	6 <i>Ki Tetze</i>
7 1st Week of Sunday School, 9 am	8	9	10	11	12 Potluck Dinner, 6:30 pm Service with Rav Rebekah, 7:30 pm	13 <i>Ki Tavo</i>
14 Sunday School, 9 am	15 Executive Board Meeting, 7:30 pm	16	17	18	19 Lay-led Service, 7:30 pm	20 <i>Nitzavim/ Vayelech</i>
21 Sunday School, 9 am	22	23	24 Erev Rosh Hashanah Service, 7:30 pm	25 Rosh Hashanah Service, 10:30 am  <i>Happy 5775!</i>	26 Lay-led Shabbat Shuvah Service, 7:30 pm	27 <i>Ha'azinu</i>  Shabbat Shuvah
28 Sunday School, 9 am	29	30				